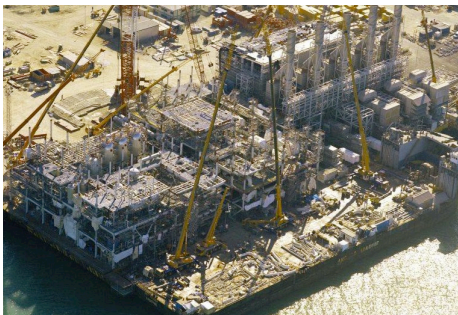




# SNØHVIT



Client: Statoil  
Location: Melkøya Island, Norway  
Construction Site: Cadiz Yard - Spain  
Completion Date: July 2005  
Contract Type: BOQ  
Total Weight: 25,000 tons



**Project Description:** The Snøhvit area comprises the Snøhvit, Albatross and Askeladd fields, which lie in the Hammerfest Basin of the Barents Sea about 140 kilometers north-west of Hammerfest in northern Norway. The project involved fabricating an LNG plant in order to bring the natural gas from the fields to land via subsea pipeline for liquefaction and export.

**Scope of Work:** Our SOW consisted on the detail engineering of structural joints, construction engineering, partial procurement of bulks, fabrication, installation and commissioning of the LNG Process Plant, with a total weight of 25,000 tons. The whole process plant was constructed on a barge with a 9-meter height, a 154-meter length, and 54-meter width. After a heavy-lift vessel transported the LNG Plant to Melkoya Island, it was installed in a dock, blasted out in advance, and then cemented. Thus becoming Europe's first export facility for liquefied natural gas.